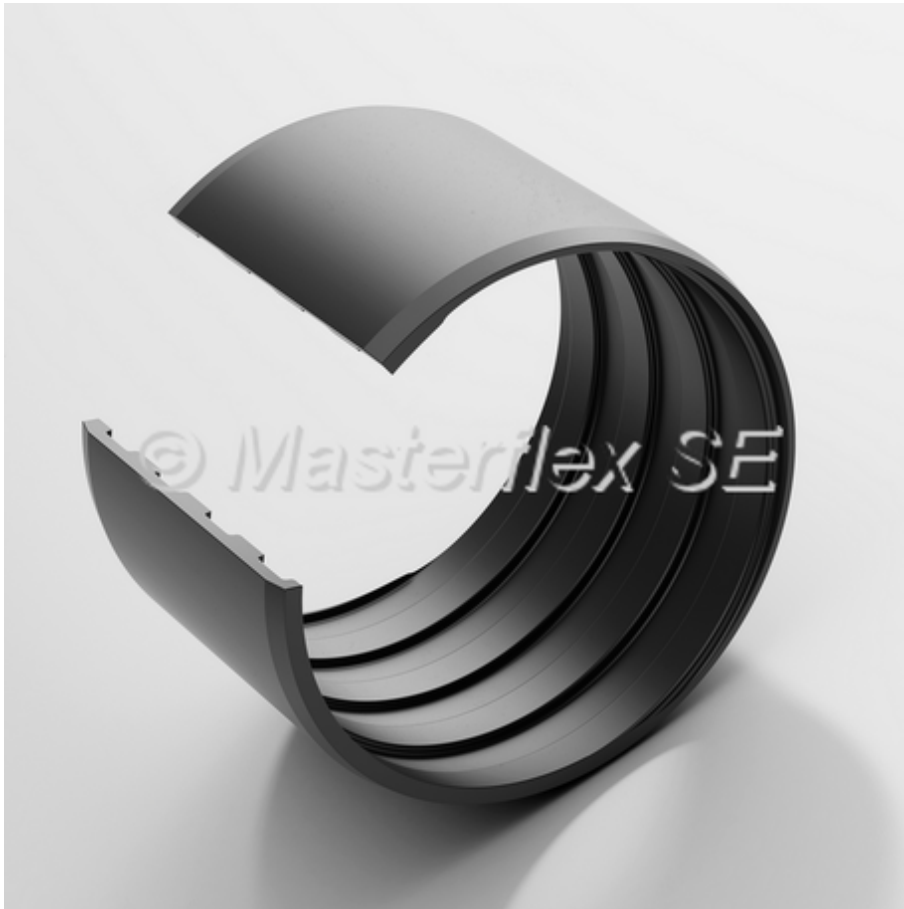


PU Hose Sleeve

Special sleeve for use with clamp collars



Material

- abrasion resistant polyurethane

Applications

- Reusable special sleeve for connecting spiral hoses from Masterflex SE hose range

Properties

- lightweight
- microbe-resistant
- shock-proof

Temperature Range

- -40°C to +90°C
- peaks to +125°C

Product Variations

DN	Da: outer Ø screw range	total length	type	old article no.	new article no.

	mm	mm			
38	59	25	L	500-038-107-L	001331
51	67	37	L	500-050-107-L	/
65	87	43	L	500-065-107-L	001342
75	101	43	L	500-075-107-L	/
80	102	43	L	500-080-107-L	001351
102	118	80	L	500-100-107-L	001355
127	147	115	L	500-125-107-L	001360
152	173	133	L	500-150-107-L	001364
204	239	180	L	500-200-107-L	/
38	59	25	H	500-038-107-H	001329
#51	67	37	H	500-050-107-H	001335
65	87	43	H	500-065-107-H	001340
75	101	43	H	500-075-107-H	001344
80	101	43	H	500-080-107-H	001348
102	118	80	H	500-100-107-H	001352
127	147	115	H	500-125-107-H	/
152	173	133	H	500-150-107-H	/
204	239	180	H	500-200-107-H	/
51	71	37	HX	500-050-107-HX	001336
65	87	43	HX	500-065-107-HX	/
75	101	43	HX	500-075-107-HX	001345
80	102	43	HX	500-080-107-HX	001349
102	130	80	HX	500-100-107-HX	001353
127	154	115	HX	500-127-107-HX	/
152	180	133	HX	500-150-107-HX	/
204	239	180	HX	500-200-107-HX	001367
38	60	25	Inline	500-038-107-I04	001330
#40	61	25	Inline	500-040-107-I04	001333
#51	70	37	Inline	500-050-107-I04	001337
#65	86	43	Inline	500-065-107-I04	001341
76	101	43	Inline	500-076-107-I04	/
#80	101	43	Inline	500-080-107-I04	001350
102	128	80	Inline	500-102-107-I04	/
127	154	115	Inline	500-127-107-I04	/
#152	180	133	Inline	500-150-107-I04	001363
#204	239	180	Inline	500-200-107-I04	001368
38	60	25	Performance	500-038-107-P	001332
40	61	25	Performance	500-040-107-P	001334
51	70	37	Performance	500-051-107-P	001339
65	86	43	Performance	500-065-107-P	001343
76	101	43	Performance	500-076-107-P	001347
102	128	80	Performance	500-102-107-P	001356
127	154	115	Performance	500-127-107-P	001361
152	180	133	Performance	500-152-107-P	001365

All data refers to a medium and ambient temperature of +20 °C.

* Refers to the inner hose lining

Subject to technical changes and colour deviations.

Available from stock

- the # marked DN